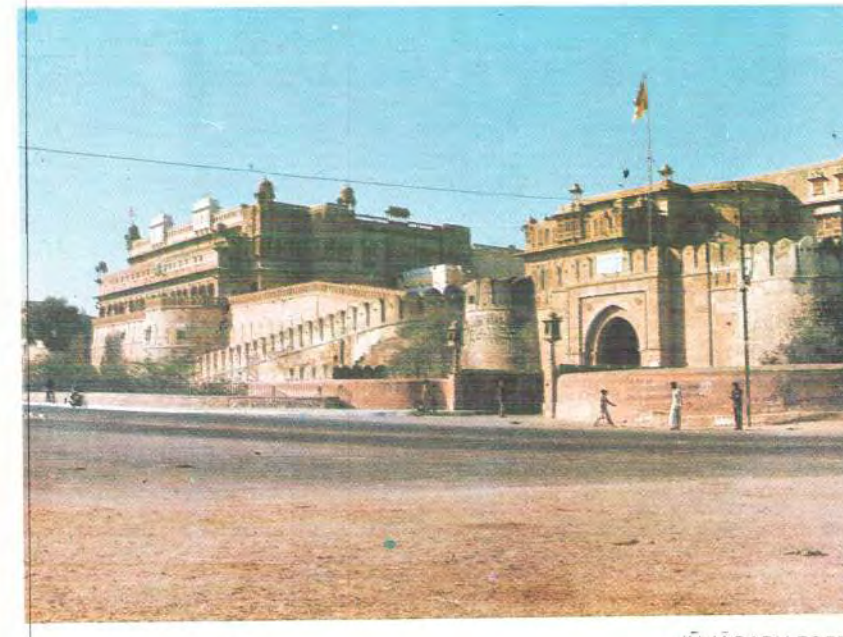


Bikaner



SURVEY OF INDIA
DEPARTMENT OF SCIENCE & TECHNOLOGY

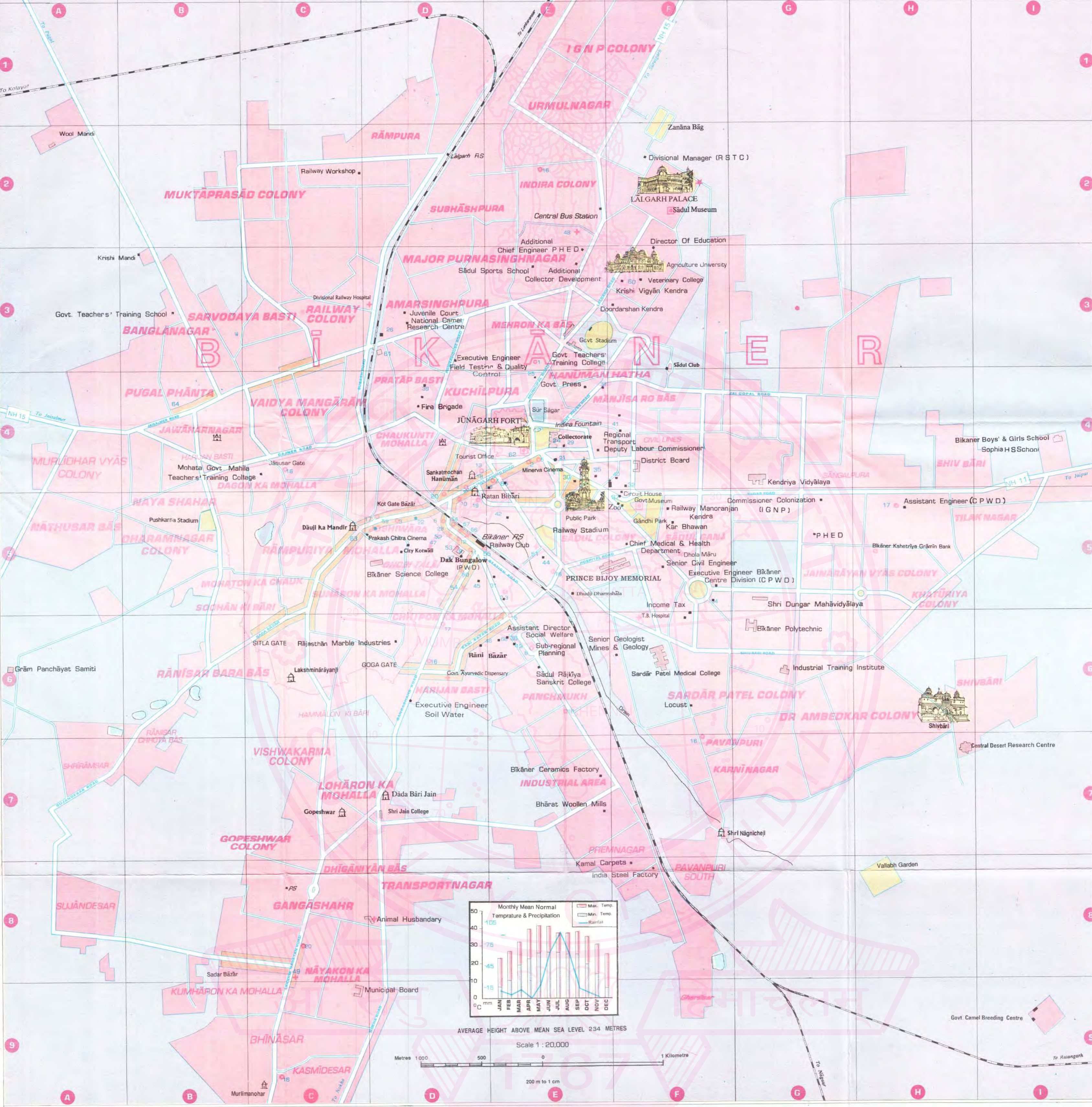
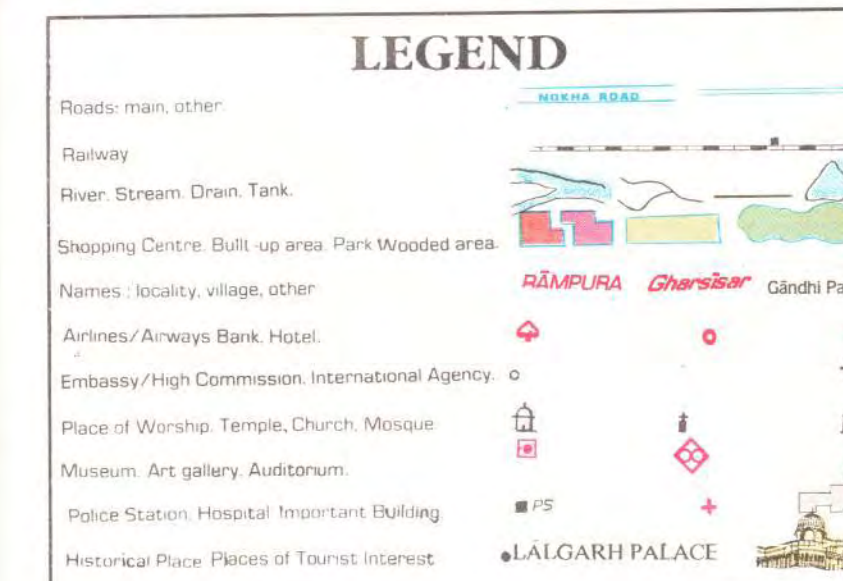
EVOLUTION OF BIKANER

Bikaner, a challenge to the inexorable forces of nature, derives its name from the combination of two names i.e. Rao Bikaji son of Jodhaji founder of Jodhpur and 'Nair' the site owner. It was founded on elevated ground on the ancient caravan routes that originated from Africa and West Asia in 1488 A.D. in that eerie, silent emptiness, raked by the harsh grating of desert winds.

An arid rocky scrub land, it is encircled by a lofty seven kilometre long battlement with five gates standing on a slight eminence that holds back the black barrenness of the Great Thar. The city contains palaces adorned with gigantic columns, arches and graceful screens, temples and massive forts. If viewed from a height, it presents the appearance of an affluent city with an imposing wall interspersed with a round tower, a few magnificent mansions, of the domes of temples and minarets of mosques, rising above the ramparts. Monuments here chiselled out of red and yellow sandstone display some of the finest creations of Rajput civilisation. The famous Gang canal to irrigate the parched land of the desert, was built by the enlightened ruler of Bikaner, Maharaja Ganga Singh.

The important sightseeing places are Jūnāgarh Fort, encircled by a moat and containing palaces made of red stone and marble with kiosks and balconies embellishing the structures at intervals, exquisitely ornate mirror work, carvings and paintings; Lalgarh Palace, a spellbinding piece of Dexteros carving in red sand stone marked brilliantly by intricate filigree work, with a well preserved collection of old photographs and trophies of wildlife. Ganga Golden Jubilee Museum with its rich collection of terracotta pottery, paintings, armoury and coins; Laxminārāyan Mandir and Ganga Niwas Public Park. Fire dance over blazing embers of coal in the backdrop of Jūnāgarh Fort on full moon nights coinciding with Kolayat Fair is also of great attraction for the tourists. The region is well known for the best riding camels in the world.

The main handicrafts of the area are dyeing and printing of cloth, embroidery, manufacturing of Lūs, lacquer-ware, lac bangles and wooden toys. Hand spinning and hand weaving of textiles and leather tanning constitute the main type of cottage industries.



REFERENCES

* Indicates incidence on map of JūNĀGARH FORT

Table below indicates the square number in red and the reference number in blue respectively for each name for locating its position in the body of the map. Where no reference number is given, the name itself is appearing in the body of the map.

Category	Name	Reference			
AUDITORIUM	1 TOWN HALL	E 3			
	BANKS	4 ALLAHABAD	E 4		
		5 BANK OF BARODA	D 3		
		6 BANK OF INDIA	D 4		
7 BANK OF MADHESH/BIHAR		E 4			
GOVT. OFFICES	1 ADDITIONAL CHIEF ENGINEER P.H.E.D.	E 3			
	2 ADDITIONAL COLLECTOR & CITY MAGISTRATE	E 4			
	3 ADDITIONAL COLLECTOR DEVELOPMENT	E 3			
	4 ASSISTANT DIRECTOR PROSECUTION	E 4			
	5 ASSISTANT DIRECTOR SOCIAL WELFARE	E 6			
	6 BIKANER MAHILA MANDAL COTTAGE INDUSTRIES	E 4			
	7 CENTRAL DESERT RESEARCH CENTRE	17			
	8 CHIEF ACCOUNTS (I.C.N.P.)	26			
	9 CHIEF MEDICAL & HEALTH DEPT. (I.C.N.P.)	16			
	10 COMMISSIONER COLONIZATION (I.C.N.P.)	16			
	11 COLLECTORATE	E 4			
	12 DEPUTY INSPECTOR GENERAL OF POLICE	E 4			
JUNAGARH FORT	1 STATE BANK OF BIKANER & JAIPUR	E 5			
	2 STATE BANK OF INDIA	D 5			
	3 UNION BANK OF INDIA	D 4			
	4 UNITED BANK OF INDIA	C 9			
	5 UNITED COMMERCIAL	C 9			
	CINEMAS	1 GANGA	E 4		
		2 MINERVA	E 4		
		3 PRAKASH CHITRA	D 5		
		4 VISHVA JYOTI	D 5		
		CLUBS	1 RAILWAY	E 5	
			2 RAILWAY MANDRANJAN KENDRA	F 4	
			3 SAUL	F 4	
			INDUSTRIES	1 BHARAT WOOLLEN MILLS	E 7
				2 BIKANER CERAMICS FACTORY	E 7
3 INDIA STEEL FACTORY				F 8	
4 KAMAL CARPETS				F 5	
5 RAJASTHAN ICE FACTORY				E 5	
6 RAJASTHAN MARBLE INDUSTRIES	D 8				
GOVT. OFFICES	1 ADDITIONAL CHIEF ENGINEER P.H.E.D.		E 3		
	2 ADDITIONAL COLLECTOR & CITY MAGISTRATE		E 4		
	3 ADDITIONAL COLLECTOR DEVELOPMENT		E 3		
	4 ASSISTANT DIRECTOR PROSECUTION	E 4			
	5 ASSISTANT DIRECTOR SOCIAL WELFARE	E 6			
	6 BIKANER MAHILA MANDAL COTTAGE INDUSTRIES	E 4			
	7 CENTRAL DESERT RESEARCH CENTRE	17			
	8 CHIEF ACCOUNTS (I.C.N.P.)	26			
	9 CHIEF MEDICAL & HEALTH DEPT. (I.C.N.P.)	16			
	10 COMMISSIONER COLONIZATION (I.C.N.P.)	16			
	11 COLLECTORATE	E 4			
	12 DEPUTY INSPECTOR GENERAL OF POLICE	E 4			
JUNAGARH FORT	1 STATE BANK OF BIKANER & JAIPUR	E 5			
	2 STATE BANK OF INDIA	D 5			
	3 UNION BANK OF INDIA	D 4			
	4 UNITED BANK OF INDIA	C 9			
	5 UNITED COMMERCIAL	C 9			
	CINEMAS	1 GANGA	E 4		
		2 MINERVA	E 4		
		3 PRAKASH CHITRA	D 5		
		4 VISHVA JYOTI	D 5		
		CLUBS	1 RAILWAY	E 5	
			2 RAILWAY MANDRANJAN KENDRA	F 4	
			3 SAUL	F 4	
			INDUSTRIES	1 BHARAT WOOLLEN MILLS	E 7
				2 BIKANER CERAMICS FACTORY	E 7
3 INDIA STEEL FACTORY				F 8	
4 KAMAL CARPETS				F 5	
5 RAJASTHAN ICE FACTORY				E 5	
6 RAJASTHAN MARBLE INDUSTRIES	D 8				
GOVT. OFFICES	1 ADDITIONAL CHIEF ENGINEER P.H.E.D.		E 3		
	2 ADDITIONAL COLLECTOR & CITY MAGISTRATE		E 4		
	3 ADDITIONAL COLLECTOR DEVELOPMENT		E 3		
	4 ASSISTANT DIRECTOR PROSECUTION	E 4			
	5 ASSISTANT DIRECTOR SOCIAL WELFARE	E 6			
	6 BIKANER MAHILA MANDAL COTTAGE INDUSTRIES	E 4			
	7 CENTRAL DESERT RESEARCH CENTRE	17			
	8 CHIEF ACCOUNTS (I.C.N.P.)	26			
	9 CHIEF MEDICAL & HEALTH DEPT. (I.C.N.P.)	16			
	10 COMMISSIONER COLONIZATION (I.C.N.P.)	16			
	11 COLLECTORATE	E 4			
	12 DEPUTY INSPECTOR GENERAL OF POLICE	E 4			
JUNAGARH FORT	1 STATE BANK OF BIKANER & JAIPUR	E 5			
	2 STATE BANK OF INDIA	D 5			
	3 UNION BANK OF INDIA	D 4			
	4 UNITED BANK OF INDIA	C 9			
	5 UNITED COMMERCIAL	C 9			
	CINEMAS	1 GANGA	E 4		
		2 MINERVA	E 4		
		3 PRAKASH CHITRA	D 5		
		4 VISHVA JYOTI	D 5		
		CLUBS	1 RAILWAY	E 5	
			2 RAILWAY MANDRANJAN KENDRA	F 4	
			3 SAUL	F 4	
			INDUSTRIES	1 BHARAT WOOLLEN MILLS	E 7
				2 BIKANER CERAMICS FACTORY	E 7
3 INDIA STEEL FACTORY				F 8	
4 KAMAL CARPETS				F 5	
5 RAJASTHAN ICE FACTORY				E 5	
6 RAJASTHAN MARBLE INDUSTRIES	D 8				
GOVT. OFFICES	1 ADDITIONAL CHIEF ENGINEER P.H.E.D.		E 3		
	2 ADDITIONAL COLLECTOR & CITY MAGISTRATE		E 4		
	3 ADDITIONAL COLLECTOR DEVELOPMENT		E 3		
	4 ASSISTANT DIRECTOR PROSECUTION	E 4			
	5 ASSISTANT DIRECTOR SOCIAL WELFARE	E 6			
	6 BIKANER MAHILA MANDAL COTTAGE INDUSTRIES	E 4			
	7 CENTRAL DESERT RESEARCH CENTRE	17			
	8 CHIEF ACCOUNTS (I.C.N.P.)	26			
	9 CHIEF MEDICAL & HEALTH DEPT. (I.C.N.P.)	16			
	10 COMMISSIONER COLONIZATION (I.C.N.P.)	16			
	11 COLLECTORATE	E 4			
	12 DEPUTY INSPECTOR GENERAL OF POLICE	E 4			
JUNAGARH FORT	1 STATE BANK OF BIKANER & JAIPUR	E 5			
	2 STATE BANK OF INDIA	D 5			
	3 UNION BANK OF INDIA	D 4			
	4 UNITED BANK OF INDIA	C 9			
	5 UNITED COMMERCIAL	C 9			
	CINEMAS	1 GANGA	E 4		
		2 MINERVA	E 4		
		3 PRAKASH CHITRA	D 5		
		4 VISHVA JYOTI	D 5		
		CLUBS	1 RAILWAY	E 5	
			2 RAILWAY MANDRANJAN KENDRA	F 4	
			3 SAUL	F 4	
			INDUSTRIES	1 BHARAT WOOLLEN MILLS	E 7
				2 BIKANER CERAMICS FACTORY	E 7
3 INDIA STEEL FACTORY				F 8	
4 KAMAL CARPETS				F 5	
5 RAJASTHAN ICE FACTORY				E 5	
6 RAJASTHAN MARBLE INDUSTRIES	D 8				
GOVT. OFFICES	1 ADDITIONAL CHIEF ENGINEER P.H.E.D.		E 3		
	2 ADDITIONAL COLLECTOR & CITY MAGISTRATE		E 4		
	3 ADDITIONAL COLLECTOR DEVELOPMENT		E 3		
	4 ASSISTANT DIRECTOR PROSECUTION	E 4			
	5 ASSISTANT DIRECTOR SOCIAL WELFARE	E 6			
	6 BIKANER MAHILA MANDAL COTTAGE INDUSTRIES	E 4			
	7 CENTRAL DESERT RESEARCH CENTRE	17			
	8 CHIEF ACCOUNTS (I.C.N.P.)	26			
	9 CHIEF MEDICAL & HEALTH DEPT. (I.C.N.P.)	16			
	10 COMMISSIONER COLONIZATION (I.C.N.P.)	16			
	11 COLLECTORATE	E 4			
	12 DEPUTY INSPECTOR GENERAL OF POLICE	E 4			
JUNAGARH FORT	1 STATE BANK OF BIKANER & JAIPUR	E 5			
	2 STATE BANK OF INDIA	D 5			
	3 UNION BANK OF INDIA	D 4			
	4 UNITED BANK OF INDIA	C 9			
	5 UNITED COMMERCIAL	C 9			
	CINEMAS	1 GANGA	E 4		
		2 MINERVA	E 4		
		3 PRAKASH CHITRA	D 5		
		4 VISHVA JYOTI	D 5		
		CLUBS	1 RAILWAY	E 5	
			2 RAILWAY MANDRANJAN KENDRA	F 4	
			3 SAUL	F 4	
			INDUSTRIES	1 BHARAT WOOLLEN MILLS	E 7
				2 BIKANER CERAMICS FACTORY	E 7
3 INDIA STEEL FACTORY				F 8	
4 KAMAL CARPETS				F 5	
5 RAJASTHAN ICE FACTORY				E 5	
6 RAJASTHAN MARBLE INDUSTRIES	D 8				
GOVT. OFFICES	1 ADDITIONAL CHIEF ENGINEER P.H.E.D.		E 3		
	2 ADDITIONAL COLLECTOR & CITY MAGISTRATE		E 4		
	3 ADDITIONAL COLLECTOR DEVELOPMENT		E 3		
	4 ASSISTANT DIRECTOR PROSECUTION	E 4			
	5 ASSISTANT DIRECTOR SOCIAL WELFARE	E 6			
	6 BIKANER MAHILA MANDAL COTTAGE INDUSTRIES	E 4			
	7 CENTRAL DESERT RESEARCH CENTRE	17			
	8 CHIEF ACCOUNTS (I.C.N.P.)	26			
	9 CHIEF MEDICAL & HEALTH DEPT. (I.C.N.P.)	16			
	10 COMMISSIONER COLONIZATION (I.C.N.P.)	16			
	11 COLLECTORATE	E 4			
	12 DEPUTY INSPECTOR GENERAL OF POLICE	E 4			
JUNAGARH FORT	1 STATE BANK OF BIKANER & JAIPUR	E 5			
	2 STATE BANK OF INDIA	D 5			
	3 UNION BANK OF INDIA	D 4			
	4 UNITED BANK OF INDIA	C 9			
	5 UNITED COMMERCIAL	C 9			
	CINEMAS	1 GANGA	E 4		
		2 MINERVA	E 4		
		3 PRAKASH CHITRA	D 5		
		4 VISHVA JYOTI	D 5		
		CLUBS	1 RAILWAY	E 5	
			2 RAILWAY MANDRANJAN KENDRA	F 4	
			3 SAUL	F 4	
			INDUSTRIES	1 BHARAT WOOLLEN MILLS	E 7
				2 BIKANER CERAMICS FACTORY	E 7
3 INDIA STEEL FACTORY				F 8	
4 KAMAL CARPETS				F 5	
5 RAJASTHAN ICE FACTORY				E 5	
6 RAJASTHAN MARBLE INDUSTRIES	D 8				
GOVT. OFFICES	1 ADDITIONAL CHIEF ENGINEER P.H.E.D.		E 3		
	2 ADDITIONAL COLLECTOR & CITY MAGISTRATE		E 4		
	3 ADDITIONAL COLLECTOR DEVELOPMENT		E 3		
	4 ASSISTANT DIRECTOR PROSECUTION	E 4			
	5 ASSISTANT DIRECTOR SOCIAL WELFARE	E 6			
	6 BIKANER MAHILA MANDAL COTTAGE INDUSTRIES	E 4			
	7 CENTRAL DESERT RESEARCH CENTRE	17			
	8 CHIEF ACCOUNTS (I.C.N.P.)	26			
	9 CHIEF MEDICAL & HEALTH DEPT. (I.C.N.P.)	16			
	10 COMMISSIONER COLONIZATION (I.C.N.P.)	16			
	11 COLLECTORATE	E 4			
	12 DEPUTY INSPECTOR GENERAL OF POLICE	E 4			
JUNAGARH FORT	1 STATE BANK OF BIKANER & JAIPUR	E 5			
	2 STATE BANK OF INDIA	D 5			
	3 UNION BANK OF INDIA	D 4			
	4 UNITED BANK OF INDIA	C 9			
	5 UNITED COMMERCIAL	C 9			
	CINEMAS	1 GANGA	E 4		
		2 MINERVA	E 4		
		3 PRAKASH CHITRA	D 5		
		4 VISHVA JYOTI	D 5		
		CLUBS	1 RAILWAY	E 5	
			2 RAILWAY MANDRANJAN KENDRA	F 4	
			3 SAUL	F 4	
			INDUSTRIES	1 BHARAT WOOLLEN MILLS	E 7
				2 BIKANER CERAMICS FACTORY	E 7
3 INDIA STEEL FACTORY				F 8	
4 KAMAL CARPETS				F 5	
5 RAJASTHAN ICE FACTORY				E 5	
6 RAJASTHAN MARBLE INDUSTRIES	D 8				
GOVT. OFFICES	1 ADDITIONAL CHIEF ENGINEER P.H.E.D.		E 3		
	2 ADDITIONAL COLLECTOR & CITY MAGISTRATE		E 4		
	3 ADDITIONAL COLLECTOR DEVELOPMENT		E 3		
	4 ASSISTANT DIRECTOR PROSECUTION	E 4			
	5 ASSISTANT DIRECTOR SOCIAL WELFARE	E 6			
	6 BIKANER MAHILA MANDAL COTTAGE INDUSTRIES	E 4			
	7 CENTRAL DESERT RESEARCH CENTRE	17			
	8 CHIEF ACCOUNTS (I.C.N.P.)	26			
	9 CHIEF MEDICAL & HEALTH DEPT. (I.C.N.P.)	16			
	10 COMMISSIONER COLONIZATION (I.C.N.P.)	16			
	11 COLLECTORATE	E 4			
	12 DEPUTY INSPECTOR GENERAL OF POLICE	E 4			
JUNAGARH FORT	1 STATE BANK OF BIKANER & JAIPUR	E 5			
	2 STATE BANK OF INDIA	D 5			
	3 UNION BANK OF INDIA	D 4			
	4 UNITED BANK OF INDIA	C 9			
	5 UNITED COMMERCIAL	C 9			
	CINEMAS	1 GANGA	E 4		
		2 MINERVA	E 4		
		3 PRAKASH CHITRA	D 5		
		4 VISHVA JYOTI	D 5		
		CLUBS	1 RAILWAY	E 5	
			2 RAILWAY MANDRANJAN KENDRA	F 4	
			3 SAUL	F 4	
			INDUSTRIES	1 BHARAT WOOLLEN MILLS	E 7
				2 BIKANER CERAMICS FACTORY	E 7
3 INDIA STEEL FACTORY				F 8	
4 KAMAL CARPETS				F 5	
5 RAJASTHAN ICE FACTORY				E 5	
6 RAJASTHAN MARBLE INDUSTRIES	D 8				
GOVT. OFFICES	1 ADDITIONAL CHIEF ENGINEER P.H.E.D.		E 3		
	2 ADDITIONAL COLLECTOR & CITY MAGISTRATE		E 4		
	3 ADDITIONAL COLLECTOR DEVELOPMENT		E 3		
	4 ASSISTANT DIRECTOR PROSECUTION	E 4			
	5 ASSISTANT DIRECTOR SOCIAL WELFARE	E 6			
	6 BIKANER MAHILA MANDAL COTTAGE INDUSTRIES	E 4			
	7 CENTRAL DESERT RESEARCH CENTRE	17			
	8 CHIEF ACCOUNTS (I.C.N.P.)	26			
	9 CHIEF MEDICAL & HEALTH DEPT. (I.C.N.P.)	16			
	10 COMMISSIONER COLONIZATION (I.C.N.P.)	16			
	11 COLLECTORATE	E 4			
	12 DEPUTY INSPECTOR GENERAL OF POLICE	E 4			
JUNAGARH FORT	1 STATE BANK OF BIKANER & JAIPUR	E 5			
	2 STATE BANK OF INDIA	D 5			
	3 UNION BANK OF INDIA	D 4			
	4 UNITED BANK OF INDIA	C 9			
	5 UNITED COMMERCIAL	C 9			
	CINEMAS	1 GANGA	E 4		
		2 MINERVA	E 4		
		3 PRAKASH CHITRA	D 5		
		4 VISHVA JYOTI	D 5		
		CLUBS	1 RAILWAY	E 5	
			2 RAILWAY MANDRANJAN KENDRA	F 4	
			3 SAUL	F 4	
			INDUSTRIES	1 BHARAT WOOLLEN MILLS	E 7
				2 BIKANER CERAMICS FACTORY	E 7
3 INDIA STEEL FACTORY				F 8	
4 KAMAL CARPETS				F 5	
5 RAJASTHAN ICE FACTORY				E 5	
6 RAJASTHAN MARBLE INDUSTRIES	D 8				
GOVT. OFFICES	1 ADDITIONAL CHIEF ENGINEER P.H.E.D.		E 3		
	2 ADDITIONAL COLLECTOR & CITY MAGISTRATE		E 4		
	3 ADDITIONAL COLLECTOR DEVELOPMENT		E 3		
	4 ASSISTANT DIRECTOR PROSECUTION	E 4			
	5 ASSISTANT DIRECTOR SOCIAL WELFARE	E 6			
	6 BIKANER MAHILA MANDAL COTTAGE INDUSTRIES	E 4			
	7 CENTRAL DESERT RESEARCH CENTRE	17			
	8 CHIEF ACCOUNTS (I.C.N.P.)	26			
	9 CHIEF MEDICAL & HEALTH DEPT. (I.C.N.P.)	16			
	10 COMMISSIONER COLONIZATION (I.C.N.P.)	16			
	11 COLLECTORATE	E 4			
	12 DEPUTY INSPECTOR GENERAL OF POLICE	E 4			
JUNAGARH FORT	1 STATE BANK OF BIKANER & JAIPUR	E 5			
	2 STATE BANK OF INDIA	D 5			
	3 UNION BANK OF INDIA	D 4			
	4 UNITED BANK OF INDIA	C 9			
	5 UNITED COMMERCIAL	C 9			
	CINEMAS	1 GANGA	E 4		
		2 MINERVA	E 4		
		3 PRAKASH CHITRA	D 5		
		4 VISHVA JYOTI	D 5		
		CLUBS	1 RAILWAY	E 5	
			2 RAILWAY MANDRANJAN KENDRA	F 4	
			3 SAUL	F 4	
			INDUSTRIES	1 BHARAT WOOLLEN MILLS	E 7
				2 BIKANER CERAMICS FACTORY	E 7
3 INDIA STEEL FACTORY				F 8	
4 KAMAL CARPETS				F 5	
5 RAJASTHAN ICE FACTORY				E 5	
6 RAJASTHAN MARBLE INDUSTRIES	D 8				
GOVT. OFFICES	1 ADDITIONAL CHIEF ENGINEER P.H.E.D.		E 3		
	2 ADDITIONAL COLLECTOR & CITY MAGISTRATE		E 4		
	3 ADDITIONAL COLLECTOR DEVELOPMENT		E 3		
	4 ASSISTANT DIRECTOR PROSECUTION	E 4			
	5 ASSISTANT DIRECTOR SOCIAL WELFARE	E 6			
	6 BIKANER MAHILA MANDAL COTTAGE INDUSTRIES	E 4			
	7 CENTRAL DESERT RESEARCH CENTRE	17			
	8 CHIEF ACCOUNTS (I.C.N.P.)	26			
	9 CHIEF MEDICAL & HEALTH DEPT. (I.C.N.P.)	16			
	10 COMMISSIONER COLONIZATION (I.C.N.P.)	16			
	11 COLLECTORATE	E 4			
	12 DEPUTY INSPECTOR GENERAL OF POLICE	E 4			
JUNAGARH FORT	1 STATE BANK OF BIKANER & JAIPUR	E 5			
	2 STATE BANK OF INDIA	D 5			
	3 UNION BANK OF INDIA	D 4			
	4 UNITED BANK OF INDIA	C 9			
	5 UNITED COMMERCIAL	C 9			
	CINEMAS	1 GANGA	E 4		
		2 MINERVA	E 4		
		3 PRAKASH CHITRA	D 5		
		4 VISHVA JYOTI	D 5		
		CLUBS	1 RAILWAY	E 5	
			2 RAILWAY MANDRANJAN KENDRA	F 4	
			3 SAUL	F 4	
			INDUSTRIES	1 BHARAT WOOLLEN MILLS	E 7
				2 BIKANER CERAMICS FACTORY	E 7
3 INDIA STEEL FACTORY				F 8	
4 KAMAL CARPETS				F 5	
5 RAJASTHAN ICE FACTORY				E 5	
6 RAJASTHAN MARBLE INDUSTRIES	D 8				
GOVT. OFFICES	1 ADDITIONAL CHIEF ENGINEER P.H.E.D.		E 3		
	2 ADDITIONAL COLLECTOR & CITY MAGISTRATE		E 4		
	3 ADDITIONAL COLLECTOR DEVELOPMENT		E 3		
	4 ASSISTANT DIRECTOR PROSECUTION	E 4			
	5 ASSISTANT DIRECTOR SOCIAL WELFARE	E 6			
	6 BIKANER MAHILA MANDAL COTTAGE INDUSTRIES	E 4			
	7 CENTRAL DESERT RESEARCH CENTRE	17			
	8 CHIEF ACCOUNTS (I.C.N.P.)	26			
	9 CHIEF MEDICAL & HEALTH DEPT. (I.C.N.P.)	16			
	10 COMMISSIONER COLONIZATION (I.C.N.P.)	16			
	11 COLLECTORATE	E 4			
	12 DEPUTY INSPECTOR GENERAL OF POLICE	E 4			
JUNAGARH FORT	1 STATE BANK OF BIKANER & JAIPUR	E 5			
	2 STATE BANK OF INDIA	D 5			
	3 UNION BANK OF INDIA	D 4			
	4 UNITED BANK OF INDIA	C 9			
	5 UNITED COMMERCIAL	C 9			
	CINEMAS	1 GANGA	E 4		
		2 MINERVA	E 4		
		3 PRAKASH CHITRA	D 5		
		4 VISHVA JYOTI	D 5		
		CLUBS	1 RAILWAY	E 5	
			2 RAILWAY M		